

A Better Way to Work: Wireless Display that's Ready for Business

An easy-to-adopt capability that your customers will love

Connecting business PCs to HD displays in conference rooms creates a collaborative environment that streamlines meetings, simplifies communication and sharing, and accelerates decisions. However, consumer wireless display technologies don't work well in business settings because they're not designed to meet the network performance requirements of the workplace. Companies also have more stringent demands for data security and manageability than consumer solutions provide.

A wireless display solution specifically built for business

Intel® Pro Wireless Display¹ (Intel® Pro WiDi) allows organizations to take advantage of wireless display technology in the workplace, with all the benefits of wirelessly connecting to projectors and displays, plus the security, flexibility, and configuration capabilities that IT requires. New Ultrabook™ 2 in 1 systems,² mobile PCs, and tablets with the latest generation Intel® Core™ vPro™ processors include Intel Pro WiDi and have features designed to deliver a better user experience while meeting the needs of IT.



Easily Manage Meetings

Give customer flexible options in their meetings.

- **EXCLUSIVE** mode gives a single presenter uninterrupted control of the display.
- **INTERACTIVE** mode lets control pass between attendees.
- **MODERATED** mode lets one person control who will use the display. Handing off control is quick and easy.



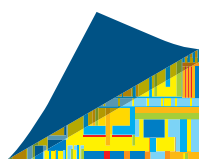
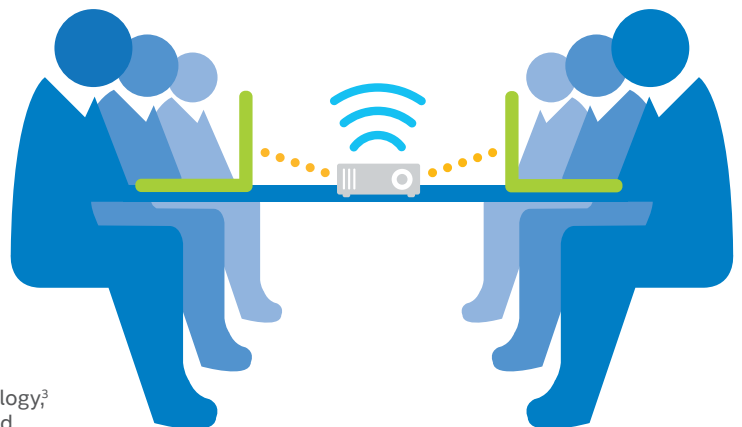
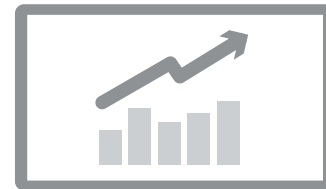
Privacy

Intel Pro WiDi allows users to verify their connection to a target projector or TV prior to actually displaying their content. This can help avoid inadvertently projecting sensitive or private information to a display in an adjacent conference room.



Security

Because Intel Pro WiDi is a part of Intel® vPro™ technology,³ IT can limit connectivity to only Intel Pro WiDi-enabled displays, reducing the risk of a laptop becoming a "soft access point" back door for malware through unsecure peer-to-peer connections.



Intel® Pro WiDi is Business Ready

There are a number of ways to enable a wireless display, but only Intel Pro WiDi is ready for business.

Solution	OS Support	Ease of Use	Security/Privacy	Manageability
Intel® Pro WiDi	<ul style="list-style-type: none"> Windows* 8.1 Windows 7 Android* 	<ul style="list-style-type: none"> Single Pro WiDi-certified display, TV, or projector OR existing device plus Pro WiDi adapter Multiple brands and variants will be available starting Q2 	<ul style="list-style-type: none"> Expanded security reduces risk of back door malware access Prevent unintended broadcast to other nearby displays 	<ul style="list-style-type: none"> Expanded – displays and devices are remotely manageable by IT
Intel® WiDi	<ul style="list-style-type: none"> Windows 8.1 Windows 7 Android 	<ul style="list-style-type: none"> Single WiDi-certified display, TV, or projector Multiple brands and variants available 	<ul style="list-style-type: none"> Basic 	<ul style="list-style-type: none"> Basic
Miracast*	<ul style="list-style-type: none"> Windows Android 	<ul style="list-style-type: none"> Single display, many brands and variants 	<ul style="list-style-type: none"> Basic 	<ul style="list-style-type: none"> Basic
Chromecast*	<ul style="list-style-type: none"> Windows Android Chrome* iOS* Mac OS X* 	<ul style="list-style-type: none"> Single display with Google brand 	<ul style="list-style-type: none"> Basic 	<ul style="list-style-type: none"> Basic
Airplay*	<ul style="list-style-type: none"> iOS Mac OS X 	<ul style="list-style-type: none"> Single display with Apple brand 	<ul style="list-style-type: none"> Basic 	<ul style="list-style-type: none"> Basic

Intel Pro WiDi devices are ready for your customers now!

All mobile PCs based on 4th generation and 5th generation Intel Core vPro processors support Intel Pro WiDi. They can be used with an Intel Pro WiDi-compliant projector, or you can use an ActionTec ScreenBeam* Display Adapter with any projector or TV. There's no reason to wait – you can deliver this benefit to your customers today!

Easy to set up and use

Setting up Intel Pro WiDi is straightforward:

1. Enable the PC fleet. As you refresh your customers' PCs, use mobile devices and Ultrabook systems with the latest generation Intel Core vPro processors. These business-class platforms include support for Intel Pro WiDi.⁴
2. Enable existing monitors and projectors by plugging in a certified Intel Pro WiDi adapter. For new displays, look for Intel Pro WiDi-enabled devices.
3. Configure your Intel Pro WiDi devices: set up wireless channels, set bandwidth parameters, and assign device names.

Start the conversation with your customers

Intel Pro WiDi is a productive, collaborative technology that your customers will appreciate. Your call to action:

- Show your customers how easy it is to adopt and enjoy business-ready wireless display using Intel Pro WiDi.
- Take advantage of normal customer PC refreshes to select a PC that has Intel vPro technology with Pro WiDi.
- Existing displays can be enabled with a simple Pro WiDi adapter now. Guide new display purchases to Intel Pro WiDi-ready monitors, projectors or TVs as they become available!

For more information, visit us online at www.intel.com/proWiDi

¹ Requires an Intel® Wireless Display enabled system, compatible adapter and TV. 1080p and Blu-Ray* or other protected content playback only available on select Intel® processor-based systems with built-in visuals enabled, a compatible adapter and media player, and supporting Intel® WiDi software and graphics driver installed. Consult your PC manufacturer. For more information, see www.intel.com/go/widi.

² Ultrabook™ products are offered in multiple models. Some models may not be available in your market. Consult your Ultrabook™ manufacturer. For more information and details, visit <http://www.intel.com/ultrabook>

³ Intel® vPro™ Technology is sophisticated and requires setup and activation. Availability of features and results will depend upon the setup and configuration of your hardware, software and IT environment. To learn more visit: <http://www.intel.com/technology/vpro>.

⁴ Select 4th Generation Intel® Core™ vPro™ processor-based systems are compatible. Contact your local Intel sales office or your distributor to obtain the latest specifications and before placing your product order.

No license (express or implied, by estoppel or otherwise) to any intellectual property rights is granted by this document.

The products described may contain design defects or errors known as errata which may cause the product to deviate from published specifications. Current characterized errata are available on request.

Copies of documents which have an order number and are referenced in this document, or other Intel literature, may be obtained by calling 1-800-548-4725, or go to: <http://www.intel.com/design/literature.htm>.

Copyright © 2015 Intel Corporation. All rights reserved. Intel, the Intel logo, Ultrabook, Core, vPro, Intel Look Inside., the Intel Look Inside. logo, and the Intel Pro WiDi logo are trademarks of Intel Corporation in the U.S. and other countries.

* Other names and brands may be claimed as the property of others.

